

# CAMPING TODAY®

October 2017



ULTRA-LIGHT • NO SEAMS • FULL BONDED STRUCTURE • UNIBODY COMPOSITE FRAME

InnoVator plans to intro 'Next Generation of RVs' without using any wood, metal, or aluminum on the vehicle structure itself. . . .**Page 14**

Volunteering/Community Involvement - What Does It Really Mean?. . . .**Page 11**

Amazing the Jobs One Finds RVing. . . .**Page 18**



# CONTENTS

<b>New Executive Board Members</b> .....	<b>page 10</b>
New State/Provincial and Program Directors appointed	
<b>Hershey RV Show</b> .....	<b>page 13</b>
Attendance records broken	
<b>Several companies release new designs</b> .....	<b>page 15</b>
Trailers, truck campers and Class B	

## DEPARTMENT

From the President .....	3
Retiree Rally 2018 .....	4
Campvention 2018 .....	5
Milestones .....	7
FCRV Activities .....	9
D.A.S.A.T. ....	11
Products .....	18
Farewells .....	20
Upcoming Events .....	21

## NATIONAL OFFICERS

President: Shari Weber  
VP of Operations: Sue Fromholzer  
VP of Programs: George Walters  
VP of Planning & Development  
Scott Serbousek  
Corresponding. & Recording Officer:  
Sue Carlson  
Comptroller: Jan Cushing  
Past President: Jack Smye

Please forward address changes to  
FCRV Headquarters, 4804 Transit Rd., Bldg. 2,  
Depew, NY 14043 — (716)668-6242  
FCRV Webpage Address: [www.fcrv.org](http://www.fcrv.org)  
Office email: [fcrvnat@verizon.net](mailto:fcrvnat@verizon.net)

## CAMPING TODAY STAFF

### Editors:

DeWayne & June Johnston  
126 Hermitage RD., Butler, PA 16001  
[D\\_Johnston01@msn.com](mailto:D_Johnston01@msn.com)

### Graphic Design/Layout

Vickie Roop  
[fcrvwebsite@aol.com](mailto:fcrvwebsite@aol.com)

All articles/information for Camping Today should be sent to  
DeWayne Johnston by the first of the month prior to publica-  
tion.



# From the President - Shari Weber



WOW! What a month of storms. Please pray for all the victims of these terrible storms and especially for our members who have been affected. Texas and now Florida as well as other areas are in the midst of major cleanup from Harvey, Irma and Maria.

## Teen Royalty

Our Teen Queen, Beth O'Neal from Illinois and Teen King Peter Kuburski from Michigan are doing a great job of attending campouts. They are enthusiastic and willing to come if their school and work schedules allow. Please feel free to invite them to your campouts.

## "Camping Today"

At the executive board meeting in Lima the executive board decided to offer a subscription for printed "Camping Today". This was done to help reduce the \$3.00 per issue cost of printing and mailing. By now you have received a letter by email or snail mail if we don't have your email. By January 1 only those members who have subscribed to the printed "Camping Today" will receive a printed copy. For members only the cost of the subscription is \$20 (\$25 CAN) per month. Contact the national office if you are interested.

## Election

We are in the period where we are looking for individuals to run for national Trustee positions. The nominating committee including Larry Roop, Chairman and a past President, Barb Dodson from Missouri and Region 2, Connie Black from Illinois and Region 4, Joe Boswell from New Jersey and Region 5, George Reynolds from North Carolina and Region 6 and Lew Acre from Ontario and Region 7 are busy identifying possible candidates. They would like to identify at least two candidates for each position. You can help! If you know of someone who would make a good trustee, please notify a member of the nominating committee. Chairman, Larry Roop has an article within this magazine. Please be sure to read it. The nomination period closes November 30, 2017.

## Campvention 2018

July 9 – 13 we will be in Doswell where the racehorse Secretariat was raised. Region 6 is already at work. Marjorie & Don Bates, Ron & Reba Ray and Gerry & Betty Owens have their team working hard planning a great week for us. This campvention has decided to use the hobo style of parking and park everyone as they come into the grounds. Please embrace this change with an open mind. There is more than one way to accomplish a specific goal. If you want to be parked with others, come in the gate at the same time. If you are parked next to someone you don't know it will be fun to get to know them during the week. We are strangers who have come together to enjoy camping and have become a camping family. Enjoy getting to know other branches of our family. Remember we are the friendliest people in the world. Be friendly to family too.

Until the next campfire,  
Shari

## ANNUAL STATEMENT OF OWNERSHIP

Camping Today is a publication of the non-profit National Campers & Hikers Association, doing business as Family Campers & RVers. Issue frequency 12 (monthly) on line at [www.fcrv.org/news/](http://www.fcrv.org/news/) Camping Today. Publisher - Family Campers & RVers, 4804 Transit Rd., Bldg. 2, Depew, New York 14043-4906, Office Manager, Pat Wittmeyer 716-668-6242 [fcrvnat@verizon.net](mailto:fcrvnat@verizon.net). Editor – DeWayne Johnston, 126 Hermitage Rd. Butler, PA 16001, 724-283-7401 [D\\_Johnston01@msn.com](mailto:D_Johnston01@msn.com). Layout / Website – Vickie Roop, 1218 Ferguson Ave., Ft. Wayne, IN 46805, 260-483-0414 [fcrvwebsite@aol.com](mailto:fcrvwebsite@aol.com). Online subscription included with membership, mailed printed copies extra fee. Average monthly 2016 circulation 3,209. USPS Pub. #724-710, ISSN # 870-1465. Owner: National Campers & Hikers Association, doing business as Family Campers & RVers (non-profit), 4804 Transit Rd., Bldg.2, Depew, NY 14043-4906. Bondholders, mortgage, and other security owners holders holding 1% or more of total amount of bonds, mortgages, and other securities: NONE. The purpose, function and non-profit status of this organization and the exempt status for federal income tax purposes has not changed in the last 12 months. Publication name Camping Today, issue date for circulation data, September 2016.





# Retiree Rally 2018

Tallahassee, FL

March 20 - 25, 2018

## Retiree Rally 2018 'Spring Break' Activities

By Barb Turner, Publicity Chair

Remember your 'younger days' when you anticipated Spring Break! Perhaps that meant Spring Break in Florida. But, maybe that meant dreaming of Spring Break in Florida, but it was only a dream. Now, March 2018 is your time to make Spring Break in Florida a reality. 'Back in the day' Spring Break in Florida meant the beach with sand, surf, sun. In March, 2018 make a beach memory by visiting beaches near Tallahassee, site of the 47<sup>th</sup> FCRV International Retiree Rally with early days beginning March 16<sup>th</sup>.

About 80 miles from Tallahassee is **Keaton Beach**, which is known for year-round fishing. The beach itself is a natural wild beach, but the site does offer public restrooms, shaded picnic areas, a fishing pier and a boat ramp where you can experience a piece of Old Florida. "According to local historians, Keaton Beach was named for Abb and Sam Keaton, two brothers who apparently first settled in the area and who are thought to be its original owners. It is believed that their family originally owned cotton farms in the area; however, their primary source of income gradually shifted as mullet fishing became one of the thriving industries in Taylor County. In the early 1900s, mullet were caught off the Florida coast, and residents of south Georgia and north Florida would come to Keaton Beach to buy the fish, which were salted down for use during the winter. Mullet became a staple food of the regional diet. The real commercialization of the beach came when Captain W. Alston "Cap'n" Brown, who owned the turpentine works at Blue Springs Creek, became involved with the area in the early 1920s. The Keaton Brothers were said to have worked with Brown, and he named the Beach in honor of them. Keaton Beach has had several primary owners throughout the years; however it has currently developed into a residential area with homes that are owned by individual families." Learn more about its history at <http://www.keatonbeach.net/history/>.



*Hagan's Cove*

About five miles south of Keaton Beach is **Hagan's Cove**, where folks can wade out to gather bay scallops. The park at Hagan's Cove is located between Steinhatchee and Keaton Beach, just off CR361 and is a good location for waders, kayakers or airboaters. The shallow shoreline can be a good place to find a few scallops, if you don't mind wading out a quarter-mile or so, where the water may still be less than waist-deep!

**Dekle Beach** is about 72 miles from Tallahassee near Perry, a quiet community which is popular for boating, fishing and scalloping. Swimming in these Florida beaches is limited. As a note, Dekle Beach is a 'clothing optional' beach. Explore the history of Dekle Beach at <http://www.deklebeach.com/history/>.

Want pristine white-sand beaches, about 76 miles from Tallahassee is **St. George State Park** on St. George Island which is a barrier island. Here you will enjoy the pristine white-sand beaches and peaceful waves. St. George Island consistently rates as one of the top beaches in the U.S. with miles of uncrowded expanses for sunning and shelling, plus clear Gulf waters for swimming and fishing, and pristine marshes for wildlife view-



**St. George Island**

ing. An interesting historical fact about St. George Island is that turpentine harvesting and cattle-raising were historic practices on St. George Island. The park has the oldest stand of slash-pine found on a barrier island; most of the old pine trees show evidence of harvesting for turpentine. Slashes were made on the trees, causing them to produce resin in an attempt to heal themselves. Containers called Herty cups were hung on the trees to collect the resin that was used to make turpentine.

For those who are interested in WW II history, during the war, the island was used by troops training at Camp Gordon Johnston. Numerous amphibious training exercises were carried out over the area's vast dunes. Remnants of practice bombs and artillery shells are still found at the park.

Visit <https://www.floridastateparks.org/park/St-George-Island> to learn more about St. George State Park.

Even though these beach areas are within a day-trip from Tallahassee, there are so many beaches to enjoy along both Florida's Atlantic Ocean side and the Gulf of Mexico side. Visit [http://www.visitflorida.com/en-us/florida-beaches/popular-beaches.html?cid=PS\\_M8\\_BING\\_291227412\\_79233573522008\\_1267736944982407](http://www.visitflorida.com/en-us/florida-beaches/popular-beaches.html?cid=PS_M8_BING_291227412_79233573522008_1267736944982407).

The 2018 Retiree Rally committee looks forward to sharing 'Spring Break' in March, 2018. Make 'Spring Break' memories at the 47<sup>th</sup> International Retiree Rally in Tallahassee.



# Campvention 2018

**July 9 - 13, 2018**

**The Meadow Event Park**

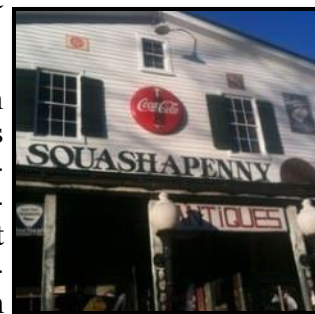
**Doswell, Virginia**

## Visit Doswell Area

By Barb Turner, Publicity Chair

The 58<sup>th</sup> FCRV Campvention will be held in Doswell, Virginia July 9-13 at The Meadows Event Center Fairgrounds in Caroline County. Campvention 2018 is being hosted by the Southeast Region.

Doswell is an unincorporated community in Hanover County in the Central Region of the U.S. Commonwealth of Virginia. Originally called Hanover Junction, in this tiny hamlet the tracks of two important railroads intersect: The Richmond, Fredericksburg, and Potomac and Virginia Central Railroads. During the famous Civil War campaigns of 1862-1864, Robert E. Lee's army relied on these railroads for supplies. Just to the east was the Doswell farm where the largest horseracing track in central Virginia was located. General stores and other businesses including an antique shop known today as 'Squashapenny' (10570 Doswell Rd) sprang up in this community. The area near the Doswell train station is a popular train-watching site for rail fans. The name



**Squashapenny Junction**  
**Antiques**

was changed to Doswell in the early 1890s in honor of Major Thomas Doswell (1823-90). The first Doswell in the area was James Doswell, a captain in the American Revolution. Formerly consisting primarily of farmland, Doswell now has many residents who commute to jobs in Richmond.

As Campvention will be held at **The Meadow Event Park**, you can learn about thoroughbred racing legend Secretariat which was born here in 1970. Three years later he captured the Triple Crown. Today his birthplace is listed on the National Register of Historic Places and the Virginia Landmarks Register. (Narrated tours are given by appointment.) Since then, The Meadow has transformed from a family farm to a multi-purpose venue that is home to the State Fair of Virginia and other notable events, for us the 58<sup>th</sup> FCRV Campvention! The 331-acre property features a mixture of original structures and newly constructed facilities.



During the narrated tour of the birthplace of Secretariat, learn how Christopher Chenery transformed his ancestral home place into a renowned Thoroughbred farm and how his daughter Penny took his dream to unprecedented heights, first with Riva Ridge, then with “America’s Super Horse,” Secretariat. Tours are conducted by Leeanne Meadows Ladin, Secretariat tourism manager and award-winning co-author of the best-selling Secretariat’s Meadow – The Land, The Family, The Legend, as well as Riva Ridge – Penny’s First Champion. The full tour takes about 90 minutes. Tour highlights:

**Secretariat** ♦ Groundshaker, a Secretariat great-great granddaughter, is now living at The Meadow. She is the last horse bred and raced by Penny Chenery.

- ♦ Mia, the spunky little miniature horse who is Groundshaker’s “barn buddy”
- ♦ The World’s Largest Horseshoe, a 600-lb. shoe modeled after Secretariat’s racing shoe
- ♦ The Chenery Collection of rare Meadow Stable memorabilia and personal family items
- ♦ Original foaling shed where Secretariat was born March 30, 1970
- ♦ Original yearling, stallion and training barns built in the 1930s
- ♦ The Cove, where the Meadow mares and foals grazed
- ♦ Secretariat stride markers showing his 25-foot racing stride
- ♦ LOVEwork sign inspired by Meadow Stable
- ♦ Historical exhibits in the Meadow Champions Galleries and Triple Crown Room in Meadow Hall
- ♦ Meadow gift shop featuring exclusive Secretariat souvenirs and personal book signing by author

If you enjoy amusement parks, you’ll want to plan some time at Virginia’s premier amusement park, **Kings Dominion** which is located at 16000 Theme Park Way, Doswell. Kings Dominion offers over 60 rides, shows and attractions including 13 roller coasters and a 20-acre water park. In 2018, Kings Dominion will open Twisted Timbers, the first steel hybrid coaster in the Mid-Atlantic region. The coaster, built by Rocky Mountain Construction, will be located in Candy Apple Grove, using some of the wooden supports once used by Hurler, the old wooden coaster.



For our Civil War buffs, **North Anna Battlefield Park** (11576 Verdon Road, Doswell) can be visited from our Campvention 2018 site. May 23-26, 1864 – “Following the stalemate at Spotsylvania Court House, Grant was determined to continue his offensive against Lee’s Army of Northern Virginia. After a failed attempt to bait Lee out of his earthworks, he found the Confederates entrenched on the south side of the North Anna River, where Lee’s ‘inverted V’ defenses forced Grant to divide his army into three parts in order to attack. On May 23rd, one of Maj. Gen. A.P. Hill’s divisions assaulted the isolated Fifth Corps on the Union right which had crossed the river at Jericho Mill. After a bloody see-saw fight, the Federal bridgehead remained intact. On the Union left flank, Maj. Gen. Winfield Hancock’s Second Corps seized the Chesterfield Bridge over the North Anna. On the 24th, an alcohol-fueled infantry attack by a brigade from the



**North Anna Battlefield Park**  
**Massaponax-church**





**Massaponax Church Grant & Meade**

Ninth Corps was repulsed at Ox Ford, the apex of Lee's lines. Meanwhile, Hancock advanced on the Confederate right. Lee hoped to strike an offensive blow, but he was ill, and the opportunity for defeating an isolated part of the Federal army passed. Once the threat of Lee's position was revealed, Grant withdrew both wings of the army back across the North Anna. Grant outflanked the position by moving downstream to the east and continued his advance on Richmond." 751 acres have been preserved. The centerpiece of the Confederate position, the 'inverted V' is preserved as the North Anna Battlefield Park. This park includes excellent walking trails up to Ox Ford, allowing visitors to see the Confederate earthworks there, which are in an excellent state of preservation

As you plan your summer trip to Campvention 2018, make note of the above places to visit. In the next few months, other places to visit will be highlighted. The Campvention 2018 Committee is looking forward to seeing you in Doswell, Virginia next July.

**Photo notes-** (Massaponax Church was the site where Union Gen. Ulysses S. Grant held his war council with Gen. George Meade in late May 1864, to plan their advance across the North Anna River. **Credit** - Douglas Ullman, Jr.) (**photo note** – **credit** - Library of Congress - Timothy O'Sullivan took a series of photographs of the council of war from the second story of Massaponax Church. Here, Gen. Ulysses S. Grant leans over the pew to examine a map in Gen. George Meade's lap.)



## Hospitalities

Well, campvention 2017 is in the history books but we are eagerly looking forward to the Southeast Region hosting in 2018. Didn't we have a great time at the hospitalities in Ohio? They are such a great opportunity to meet new friends and exchange ideas. We are hoping to have many scheduled in VA. If your club or state wish to host a hospitality please let us know. Phone number is 515-520-7958. Email is [lanelleishmael@yahoo.com](mailto:lanelleishmael@yahoo.com) or you can write for a form, 315 Audubon Circle, Belvedere, SC 29841. Looking forward to hearing from you.

Leon and LaNelle Ishmael, Hospitality chairs



## 64th Anniversary Celebrated

Jack and Grace Trimble, Lancaster, PA celebrated their 64th wedding anniversary September 7, 2017. They are longtime active members of the Lancaster chapter.



**If you do not  
have access  
to email...**

**CAMPING TODAY**

**WILL BE AVAILABLE IN HARD COPY  
BY SUBSCRIPTION ONLY**

paper.

This will be a black & white edition, printed, stapled,  
sealed and mailed from the national office using basic copy

It is available primarily for those who do not have access to email. The subscription fee of \$20/US or \$25/CDN pays for postage and materials used in preparing each copy. These prices and this service will begin in January 2018, and will be in effect until further notice. If your membership expires during your subscription period, and you choose not to renew your membership, your subscription to Camping Today will end at that time and there will be no refunds issued for the remaining months of the subscription.

***Subscriptions are available only to current members of FCRV, are on a calendar year basis, and will be renewable at the end of each year.***

If you wish to sign up for this service, please complete the form below and return it, with a check payable to "FCRV" at the address below. Please call the office at (716) 668-6242 with any questions you might have, or to make arrangements to pay by credit card.

Family Campers & RVers

4804 Transit Road Building 2

Depew, NY 14043-4704



**PLEASE SIGN ME UP FOR A ONE YEAR PRINTED SUBSCRIPTION TO  
CAMPING TODAY**

**NAME:** \_\_\_\_\_

**ADDRESS:** \_\_\_\_\_

**CITY:** \_\_\_\_\_ **STATE:** \_\_\_\_\_ **ZIP:** \_\_\_\_\_

**MEMBERSHIP ID#:** \_\_\_\_\_

**TELEPHONE:** \_\_\_\_\_

For Office Use Only

Member ID verified: \_\_\_\_\_

Check # \_\_\_\_\_

Date paid: \_\_\_\_\_

For year: \_\_\_\_\_



# FCRV Activities

## Wildlife Grants Presented



The Alf Campers presented checks for two wildlife grants to the Highland, MO Animal Rehab Shelter and Eureka, MO Endangered Wolf Center.



Mary Lehnerd presents a check for \$400 to Glade Run Lake restoration, Valencia, PA.



Grant for Fort Atkinson Historical park Michelle Kiel presented the check to Jason the superintendent



Joanie Stone presents \$600 grant check to ET Mahoney State Park and the Nebraska Game and Parks Commission

To the FCRV Club

On behalf of ET Mahoney State Park and the Nebraska Game and Parks Commission we would like to say **Thank You** for your continued support of your State Parks and State Historical Parks. Without contributions like yours we wouldn't be able to offer the great facilities our guests have been introduced to throughout the years.

With your donation we plan on the continued improvement and renovation of the Bird Viewing Area behind the parks administration building. Our goal for this project is to provide a yearlong destination for both our migratory birds and our park visitors. This area will include feeders, a flowing spring to provide a chance for birds to drink year long and different plants to offer cover and additional food sources. In the spring and summer months we hope to attract Monarch Butterflies with a natural pollinator plot directly behind the birding area.

Please feel free to take the opportunity to come and see our improvements made possible by your organization!

Thank you,

Jake Rodiek

Park Superintendent



---

## NEW EXECUTIVE BOARD MEMBERS

FCRV PRESIDENT, SHARI Weber recently welcomed some new members to the Executive Board. Emma and Bob Moore were appointed as Florida State Directors, following Pam and Dick Lykens. Lew and Lyn Acre are the new Ontario Provincial Directors following Terry and Faye Swanburg. Ron Braley is the director of the new Veterans program.



***Lew & Lyn Acre, Ontario Provincial Directors***



***Emma & Bob Moore, FL State Director***

**Dick and Kathy Buresh** are acting as interim C.A.M.P. directors while Donella Wilkes recovers from health problems. Bureshes can take reports and supply information. Address: 205 S. Stewart Rd., Unit 172, Mission, TX 78572. d.buresh68@gmail.com.



***Ron Braley, Veterans Program Director***

## Volunteering/Community Involvement - What Does It Really Mean?

### Part 2

**Conservation:** Family Campers & RV members have always been concerned with protecting the environment and conserving natural resources. A history strong in conservation programs has earned FCRV the title of “Campers with a conscience.”

In August, ALF Campers joined up with Operation Clean Stream while on a float trip and picked up trash in the Courtois (Pron: COOR – tuh way) River in Leasburg, MO. ALFs picked up trash in the river and along the banks on their four mile float trip.



The group also volunteers occasionally with the Cardinals Green Team. The Green Team is a group of volunteers who walk down the aisles of the seating bowl in-between innings collecting recyclables from fans and promoting recycling at Busch Stadium. As an added bonus In exchange for your services, volunteers are able to watch the game in standing room only sections of Busch Stadium.

**DASAT (Disaster and safety Awareness Training Program):** Two ALF family members are CERT (Community Emergency Response Team) trained. If in the event of a disaster they will be prepared and will support emergency response agencies

**Wildlife Refuge Program:** ALF Members apply for FCRV Grants every year to promote Wildlife Conservation.



**Humanitarian Activites:** Throughout our organization, our members participate in many humanitarian activities. This allows us to serve our communities and help others that may be less fortunate than we are. ALF Campers adopts a family every year. They make and donate tie blankets to Children’s Hospital in St. Louis, they work at Food Banks, and many others.

That is what Community Involvement is really about. Finding your passion and stepping into it. My passion is in working with the community any community to open up opportunities for increased safety, awareness and prevention involving children, teens and adults. **What is yours? I would love to hear about it? Send me an email**

by Micki Luensman [fcrvdirstrategicdev@gmail.com](mailto:fcrvdirstrategicdev@gmail.com)



## D.A.S.A.T.

By Joe Boswell  
National D.A.S.A.T. Director

## Preparing for a Disaster

Our thoughts are with the many member of FCRV who live in Texas and or have loved ones who have been affected by the destruction of Hurricane Harvey. The pictures on the various news channels give one a vivid reminder how important it is to be prepared for any disaster.

Florida is the next state to be in the direct line of destruction. Our FCRV members, who live in this state, may be facing disaster within the next several days. This time it will possibly be the hurricane Irma. Citizens in this part of the country are already heading the warnings and are making preparations for the impending severe weather.

All of this brings to mind the basics. How prepared are you for a given weather emergency? In the instances mentioned above, it is very important that you adhere to the various advisories and decisions made by the local authorities and emergency personnel. Once the message has been issued to evacuation-make hast and pack up your essential items, and do as directed. Remember your own life and the safety of others could be in great danger. Do not wait until the last minute as your own safety may be at great risk for danger. Waiting until it is too late, could lead to your own death and as well as the death of those whom you love.



Some basic things to gather, as recommended by any Emergency evacuation coordinator: essential insurance papers- so you can prove the various aspects and points of your own individual insurance policy. Medications-in the original bottles, the weekly pill carrier is nice, but on the bottles is important information, such as the name of the prescription, the doctor, and the type of medication, dosages, and other valuable information.

It is best that you have a "to-go" bag packed and ready to depart at any time. In this bag, or piece of luggage should be some of the following. Take enough bottled water, enough for 3 or more days for each person in your household, along with two or more changes of clothing along with blankets for each person. You may need them at a shelter. Include any and all Medical information along with copies of your insurance information. A flashlight, with fresh batteries is very useful if the electric goes out. First Aid supplies are always helpful as you may fall and need a band-aid or other type of simple medical care. Simple tools, a knife, hammer, screw driver, Phillips screw driver, anything you think might be useful. Specialty items should include but are not limited too: baby needs, adult medications, entertainment items for kids, and the all important family documents. Any other emergency supplies you can think of should be ready to "go" within a moments notice. Now remember you will need to transport these items in your car or truck, and in some instances you may have to carry these items as you walk to the evacuation site. Remember your own strengths and weaknesses as you will have to do as much as possible for yourself.

Let us not forget our four legged members of the family, our cats and dogs. Small animals can be put into the travel cages for transport. Larger animals need to be on a leash and under your control at all times. They too, sense the danger, and are scared. Disaster kits for pets include; medications, copies of vaccination records, first aid kits, leashes or pet carriers, current phone number of your vet, food, food and water dishes, toys and other information about your pet. Some states have evacuation centers that allow one to bring with them their pets. Others do not, so make sure you have made plans to evacuate your pets in case of an emergency. Waiting for the last minute to evacuate and then attempting to find evacuations centers that allowed for both humans and pets can be extremely difficult. Make your plans ahead of time thus this entire process for everyone will go a lot smoother.

RV owners, you are lucky as this could be you home for several days. Once the advisory has been

made to evacuate, make sure you have many of the items mentioned previously, gas up and drive as far away as you can go away from the danger. This RV can be your friend has you have all of the basic essentials with you for your basic survival. True, the RV can be a dangerous place during high winds and a tornado, but if you have traveled far enough you may be away from the biggest and most dangerous part of the several day weather storm. Remember Hurricanes, in general can last for several days before the strong winds and rain subside. When thing are safe, and the all clear has been given you can then return home and make a complete assessment of the damage, and every so slowly begin to get yourself back to some normalcy.

This is just a short summation of what to do in case "of" a severe weather emergency. It is very important that you pay attention to the weather and listen to the Weather forecaster in your given county and state. Follow the advise of your emergency officials and you will be every so much better for doing so. Remember, always to be safe.



Next year we will be electing three Trustee positions as required by our constitution & bylaws. The positions we will be electing next year will be President, Vice president of Programs, and Recording/Corresponding Officer. The election committee would like to have two candidates for each position. I know, for a fact, that we have many qualified members that would be excellent Trustees. We need you to volunteer to run for one of these positions. Without volunteers, it is very unfair to ask the same people to serve year after year. Speaking from experience, I can tell you the job of a trustee is not difficult and the friends and experience you will gain is well worth the effort. If you would like more information, please contact me, or one of my committee members.

Larry Roop, Chairman - fcrvind@aol.com

Lew Acres - lewacre@amtelecom.net

Connie Black - ilfcv@yahoo.com

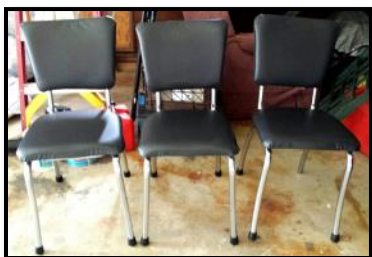
Joe Boswell - fcrvdasat@gmail.com

Barb Dodson - mostatedir@sbcglobal.net

George Reynolds - ggulfstream01@aol.com

## Restored Family Items Given To Grandson

By Barb Turner



Jim and Barb Turner recently completed the restoration of some old dinette chairs originally belonging to an aunt and uncle and passed on to various family members for a variety of use (and abuse). You know Jim as an FCRV Past President and golf organizer and Barb with her email updates where she relays passings, health problems, and good news of FCRV members. She also posts rally pictures.

They found the chairs resting in a basement and crafters at heart, decided they needed revived. Jim disassembled them and Barb replaced the old covering. They then gave them to their oldest Grandson, Jacob Pytel who was pleased to make a new home for them.



## Texas State Association Fall Campventure

We are planning to have our annual state campout at Oakdale Park in Glen Rose, Texas on Thursday, November 2 thru Saturday night, November 4th and leave on Sunday, November 5th after church. All sites have full hookups, 30 to 50 amps and most are pull -thru. This is a city park and is located downtown close to everything. We are currently working on the schedule of events, but if you would like to help in any way, please let us know. Ideas and suggestions would also be appreciated.

This area of Texas has a lot of history, going back many centuries, as well as new discoveries. There are many boutiques, museums and restaurants to keep you entertained when not involved in activities being planned at the park.

If you are already a FCRV member and that is currently a member of TSA and would like to be a mem-

ber-at-large, you can do so at the Campventure or by sending your name, address, phone number, e-mail, FCRV expiration date, and five dollars (\$5) to Cynthia Scott, TSA Treasurer at 17036 Vinland Drive, Addison, Texas 75001.

We plan a potluck on Saturday night with games and crafts provided at other times during the rally. Camping fee is \$28.00 per night, payable by check or cash at the rally. Credit cards are not accepted. The camp-ground address is 1019 NE Barnard Street, Glen Rose, Texas 76043. Some of us will be going early and would love to have you join us. Please give Kathie Johnson a call at 713-898-3204 or email [kathiejohnson@suddenlink.net](mailto:kathiejohnson@suddenlink.net) to let us know to be looking for you. E-mail Kathie and request a pre-registration form.

## Hershey Show Closes With Record Attendance

By Rick Kessler  
Courtesy of RV Business

With a total gate attendance of 64,242 — easily surpassing last year's record of 57,692 — the 49th Annual America's Largest RV Show in Hershey, Pa., hosted by the Pennsylvania RV & Campground Association (PRVCA), was yet another sign the industry is humming along on all cylinders. (To view a slideshow scroll to the right side of the [RVBUSINESS.com](http://RVBUSINESS.com) home page. Photos by Kirk Zutell).



"The Hershey Show is usually an indicator for what's in store for next year," PRVCA Executive Vice President Heather Leach told RVBUSINESS.com. "It looks like everybody's predictions are right track."

"We were all very pleased with this year's show," Leach added. "All the dealers and exhibitors that I talked to said they had a wonderful show. A lot of dealers were having record days, so if they're happy, we're happy."

After opening to a steady drizzle on Wednesday (Sept. 13), Leach reported that the remainder of the show enjoyed ideal conditions. "It cleared up and was sunny and warm," she said. "It really was perfect weather."

One of the industry's signature events, the show began Sept. 11 with two industry-only days for education, training and final set-up before giving way to throngs of consumers who, due to newly enacted Giant Center requirements, needed to pass through metal detectors at the entry points.

## Upcoming RVIA Shows

### California RV Show

October 6-October 15, 2017

Fairplex

Pomona, CA (USA)

Produced By:

RVIA

41 S. Wake Forest Ave.

#3965

Ventura, CA 93006

571-665-5851/571-665-5864

Contact: [Tom Gaither or Gloria Reeder](#)  
[theBestRVShow.com](#)

### Oregon State Salem Fall RV Show

October 12-October 15, 2017

Oregon State Fairgrounds

Salem, OR (USA)

Produced By:

Westlake Promotion, Inc

17812 41st Street, SE

Snohomis, WA 98290

206-783-5957

Contact: [Sam Scott](#)

[www.salemfallrvShow.com](#)

### RV Liquidation Super Sale

October 13-October 15, 2017

David L Lawrence Convention Center

Pittsburgh, PA (USA)

Produced By:

Three Rivers Promotion

1000 Ft. Duquesne Blvd

Pittsburgh, PA 15222

304-680-5471

Contact: [Rob Young](#)

[www.pittrvsupersale.com](#)

### Pittsburg RV Liquidation Super Sale

October 13-October 15, 2017

David L Lawrence Convention Center

Pittsburgh, VA (USA)

Produced By:

Three Rivers Promotions

10 Mossy Rock Road

Masontown, WV 26542

304-564-5157

Contact: [Rocco Lamanna](#)

[www.pittrvsupersale.com/](#)

### Toronto Fall RV Show and Sale

October 13-October 15, 2017

Toronto Congress Centre

Toronto, ON (CANADA)

Produced By:

Ontario Recreation Vehicle Dealers Association

110 Freelon Road

Freelton, ON L8B 0Z3

905-659-8800

Contact: [Natalie Conway](#)

[rvshowsonario.ca](#)

### Georgia RV & Camper Show

October 13-October 15, 2017

Cobb Galleria Centre

Atlanta, GA (USA)

Produced By:

NATC Shows

1455 Oakbrook Dr.

Ste. 600

Norcross, GA 30093

770-279-9899

Contact: [Rhonda Sodel](#)

[nateshows.com](#)

## InnoVator Plans to Intro 'Next Generation of RVs'

Courtesy of RV Business

A Bristol, Ind.-based manufacturer is investing \$2.5 million to build a new factory that will produce the 'next generation' of recreational vehicles.

WNDU reported that InnoVator RV will do so without using any wood, metal, or aluminum on the vehicle structure itself.

"This material, we believe, is the strongest in the industry. We have it trademarked as Parma Shield," said company co-owner Phillip Biscan while rapping





his knuckles on the shell of a 25 foot prototype. “And it’s just strong, just strong as all get out.” It’s so strong that Parma Shield accounts for every fiber of the InnoVator unibody chassis. “It’s like a fiber stranded polymer, it’s a cross woven between different polymers to get a panel strength that’s required for the structure,” said InnoVator co-owner Randy Carr. “You’re going against bigger companies that’s been in it for years, they’re well financed, I mean it’s hard to build what they’re building and outdo them at their game. So the only way that we can do it is to try to change the game.”

For the full story and to view a video click [here](#).

## ‘Cruiser RV’ Unveils New MPG, Radiance Lines

Courtesy of RV Business

Intent on carving out a larger share of the spiraling ultralightweight trailer market, Cruiser RV will be launching new offerings in its Radiance and MPG lines at Elkhart RV Open House that combine clean, automotive-style exterior lines with a full complement of interior upgrades.

“We have seen continued growth in both lines over the past two years,” stated Chris Hermon, president of parent Heartland Recreational Vehicles LLC, in a press release. “We are looking to bolster that growth, introducing new floorplans that hit a competitive price point while also bringing innovation and modern design to the ultralightweight segment.”



John Jones, general manager for Howe, Ind.-based Cruiser RV, reported that the builder will be unveiling the Radiance 25RB, a 30-foot trailer that he envisions as “the staple couples coach in the market,” along with a 32-foot 26BH at Open House. Both floorplans target the half-ton pickup segment and feature a “true 72- by 80-foot king size” bed and 6-foot, 11-inch barrel roof.

“Providing a true king size bed is a significant set-apart feature in the ultralight category,” Jones said, “and the 6-foot, 11-inch barrel roof is the highest in the industry.”

Other 25RB features include a 6,000-pound dry weight, super slideroom with trifold sofa and dinette, and a large rear bath with a spacious 36-by-30-inch shower.

The 26BH, weighing in at 6,400 pounds, offers a bunk-over-bunk configuration packaged with opposing 40-inch TVs in the living area, a powder-coated exterior kitchen, two-tone front cap and a power tongue jack.

Leading a redesign in Cruiser RV’s MPG lineup, the company is rolling out the 2120, a couples coach with an open concept floorplan, and a 24-foot 200ORD at Open House.

“We’ve had a lot of success with the MPG,” noted Jones. “These two models address some key areas of the market with and are positioned to further grow our market share.”

The single-slide 2120, with a dry weight under 4,900 pounds, is set off by a two-tone painted front cap, recessed countertops to add more space and oversized under-dinette storage. Cruiser also added an optional 40-inch TV.

The 200ORD at 4,700 pounds is towable by larger SUV’s in addition to half-ton trucks. The layout features a rear dinette slideroom and a revamped front bedroom. “We changed the cabinet designs in to create a more inviting bedroom area, while still offering the true king-size bed,” Jones said. “It really hits on a lot of features that are resonating with consumers.”



He added, “We’re excited about the new lineup and are poised to accelerate our growth with construction of a new state-of-the-art facility. It will allow us to step up production while also cutting turn-around times for our dealers.”

## Lance Campers Designed to Fit New Ford Bed

Courtesy of RV Business



Lance’s new 2018 lineup of signature truck campers line offers several upgrades while also compatibility with the new Ford truck bed.

“Lance continues to refine our segment-leading truck camper lineup,” stated National Sales Manager Gary Conley in a press release. “Revising every model we offer to accommodate the new Ford truck bed configurations so that inordinate amounts of lift or spacing are not required was a herculean task by Randy Hunter’s research and development team.”

In addition to the design modifications needed for proper Ford fitment, Lance added the latest technology “flat-bottom” microwave that eliminates the old-school turntable type microwave. The company also included the “Keyed-Alike System” which provides a single key solution for both the entry door

and storage compartment doors. Additionally, most models were also given strategically placed steps to make access to the cab-over area easier.

Lance now boasts a line of nine hard-wall truck campers, addressing the various markets in the segment including the half-ton designed 650, the popular short bed single slide 855S, and the flagship double slide 1172. L

Visit [lancecamper.com](http://lancecamper.com) to find all the product information details of this years truck camper line up.

## Leisure Travel Vans Debuts New ‘Wonder FTB’

Courtesy of RV Business

Leisure Travel Vans, a brand of Triple E Recreational Vehicles, has added a new, twin bed FTB model to the Wonder lineup featuring European interior styling and built on Ford Transit chassis.

“We believe the new Wonder front twin bed model offers customers an innovative second option to the original Murphy Bed floorplan. Some of the highlights of the new Wonder FTB include an open, spacious layout, a generous galley for those of us who enjoy cooking on the road, and a large bathroom with a 30-inch-by-32-inch enclosed shower,” commented Ryan Elias, general manager of Triple E RV, in a press release. “It’s amazing how spacious it feels for a motorhome under 25 feet in length. Our design team has once again done a great job with the new Wonder FTB.”

The coach offers an abundance of interior storage and can be outfitted with either walnut or modern rift cabinetry, both featuring Bianco White FENIX NTM accent doors and LED lighting throughout. The FENIX NTM matte surfaces are scratch-resistant, anti-fingerprint, and anti-bacterial, making their European design easy to clean and care for. On the exterior, the Wonder features an 48 cubic feet of stor-



age, with an exceptionally large rear storage compartment.

The Wonder FTB also brings quality entertainment to the open road, featuring a swing-out 28-inch LED TV, Bluetooth soundbar and Blu-ray player. The 32-inch-by-76-inch twin beds can also slide together, forming a single bed wider than a residential queen bed.

The ergonomic galley features a two-door, 6.7 cu. ft. refrigerator/freezer and a convection microwave alongside the large Corian solid-surface countertop with room for a coffee machine or toaster. Kitchen accessories such as hooks and paper towel holder are attached to a multipurpose track and deep, full extension drawers provide generous storage.

The Wonder's stylish interior is matched with standard graphite or white suede full-body paint. Measuring under 10 feet in total height and 24 feet, 9 inches in length, the compact Wonder features contoured sidewalls, a fiberglass flex roof and aerodynamic integrated front and rear fiberglass caps.

Cutting-edge features include the Ford SYNC with MyFordTouch infotainment, Apple CarPlay, Android Auto, and GPS navigation system. The Wonder is also equipped with a lane-keeping safety feature that alerts the driver when the vehicle drifts out of a lane.

The Wonder is built on the Ford Transit cutaway chassis with a 178-inch wheelbase, a GVWR of 10,360 pounds and is powered by a 3.2L I-5 Power Stroke Turbo Diesel with 185HP, 350 ft-lb of torque and 6-speed automatic transmission.

The 2018 Wonder FTB will be available starting late 2017 and has a base price of \$108,550.

The Wonder FTB is currently on display at America's Largest RV Show. For more information visit [www.leisurevans.com/wonder-ftb](http://www.leisurevans.com/wonder-ftb).

## Highland Ridge to Introduce All-New Highlander Toy Hauler Line-Up at Hershey RV Show

Highland Ridge RV, a division of Jayco Inc., announced it will unveil the re-positioned Highlander Toy Hauler this week at the Hershey RV Show in Pennsylvania. Several key improvements have been made to the product, including introducing it in a price point well below most of its competition. Below are just a few key product features:



Highlander Toy Hauler.

- **Full-Profile Roof Line:** the taller roof-line allows Highlander Fifth Wheels the ability to utilize 7'-7 1/2' tall slide-out rooms in all models. The increased volume provides a more open floorplan utilizing larger windows and a taller slide-out room -giving the appearance of a much larger unit.
- **Frameless Windows:** our frameless windows, normally used in competing product offered at a much higher price point, enhance the 'high-end' exterior appearance of the

• **Corian® Solid-Surface Counters:-** true Corian solid-surface counters are now a standard feature in all Highlander Toy Haulers. Corian has long been known for its durable, non-porous, easy-to-clean surfaces and has been used in several of Highland Ridge's high-end units for several model years.

"We are very much looking forward to the launch of the redesigned Highlander Toy Hauler this week in Hershey," states Jason Poole, General Manager of Highland Ridge RV. "The entire Highlander team has worked overtime to bring this new platform to both our dealers and consumers at the Largest Retail RV Show, and we feel that all of this hard work will definitely pay off." Added Poole, "When you compare all of the features this toy hauler has, apples-to-apples, at this lower price point, we are confident we have brought to market an exceptional product with an exceptional value."

Highland Ridge RV will also be marketing their entire product lineup at the Elkhart Open House. For more details on the product, please contact Jason Martin (Product Manager-Highlander Toy Haulers) at [jtmartin@highlandridgerv.com](mailto:jtmartin@highlandridgerv.com)





## Amazing the Jobs One Finds RVing

Great jobs that let you travel are out there! We have seen so many people making a living in a unique or creative way, freeing them up to enjoy more of life each day. Do something you like or something that allows you to do something you like.

Read more [HERE](#).

## Dometic Awning Power Wand Wins Award at RVAA

ELKHART, Ind. – Dometic was honored to have its new Awning Power Wand selected as being one of the top three items in the 2017 Product of the Year Awards at the RVAA (Recreational Vehicle After-market Association) Executive Conference in San Diego, California.



Trey Miller, Dometic's Director of Marketing- Americas, commented, "The new Power Wand is revolutionizing RV awning upgrades. It allows a user to have their existing manual awning replaced with a power awning without the need to have power run from the coach, saving them up to thousands of dollars in installation and alterations to their RV that could have traditionally deterred them from upgrading."

The Power Wand is easily installed through a small connection harness that attaches quickly to the lower portion of the hardware arm with two screws or pop rivets and is then connected directly to the awning wiring. The self-contained rechargeable Power Wand can then be plugged into the connection harness and with the flip of a switch the awning can quickly and easily be extended or retracted. The Power Wand unit can then be unplugged and stored until the next use.

The Power Wand's battery will last an entire season on a single charge with typical usage. Full recharge time is only four hours and additional batteries can be purchased for full timers or heavy awning us-

ers. The unit comes complete with everything needed for installation and operation- the Power Wand unit, rechargeable battery, battery charger and the awning hardware connection harness.

Miller stated, "Dometic continues to provide solutions to enhance the RV lifestyle and the Power Wand is just the latest example. Many of our innovations are derived from feedback we receive directly from consumers."

## Products

### Rad Dog Collapsible Pocket Bowl



Weighing under an ounce and taking up less pocket space than a key fob, the [Pocket Bowl](#) from [Rad Dog](#) keeps 4-legged friends hydrated, fed and happy wherever the trail leads.

The Pocket Bowl is so small, it fits in the key pocket of running, hiking or beach shorts. Unfolded, it holds 16oz of food or water and is ready to take on all the slobber and spills of mealtime.

**\$11.95**

Available in Black and Red; Designed, sourced and made in the USA

A waterproof collapsible pocket food and water bowl for dogs that folds into the size of a camera battery!



The pocket bowl was designed for those that like to travel light. Made from waterproof nylon, it is nearly weightless at less than 1 oz. and it packs very small. Folded, the Pocket Bowl is so small it fits in the key pocket of running, hiking or beach shorts. Keep one in your purse, backpack, or your car's glove box. It's easy to take anywhere. When you want to take your dog running or to the beach, but don't know if there will be a water source, the Pocket Bowl is the solution.

#### Features:

- Weighs less than 1 oz.
- Holds 16oz of food or water
- Packs very small
- Waterproof

Great when you want to travel light.

## Winegard Debuts Redesigned 'DISH Playmaker'

Courtesy of RV Business

Winegard Co. has introduced the newly redesigned **DISH Playmaker** and **DISH Playmaker** dual automatic satellite HDTV antennas developed exclusively for DISH high definition and standard definition programming.

According to a press release, the new antennas make watching DISH Pay-As-You-Go programming easier than ever, and are available through Camping World supercenters and RV dealerships nationwide starting at \$249 MSRP.



The re-engineered platform offers more performance and flexibility to mobile TV viewers while retaining the user-friendly operation of DISH's mobile protocol setup wizard. Major changes include a new reflector design that can add up to 20% increase in signal strength, the ability to permanently mount to a RV roof with accessory kit, and the addition of the dual models to allow for multiple receiver viewing.

"Winegard has a history of developing high-quality products aimed at increasing the quality of life for our mobile consumers," said Keith Larson, director of mobile sales and marketing for consumer products. "The new line of DISH Playmakers stays true to that, giving users increased performance and different options of utilizing the system to fit their specific needs."

DISH Playmaker features include:

- 100% fully automatic.
- Powered by coax connection through DISH Solo HD receiver.
- Single and dual output models.
- A high-strength, military-grade aluminum alloy reflector adding maximum durability resulting in up to a 20% increase in signal strength.
- Reliable, high-performance stepper motors provide speed and precision.
- Easy grip handle for effortless carrying.

- Sleek and compact measuring 16-inches in diameter and 13-inches tall; weighs seven pounds.

The DISH Playmaker and DISH Playmaker Dual are compatible with DISH Solo HD receivers, including the DISH Wally and can be utilized with DISH Pay-As-You-Go programming. The antennas are designed and built in Winegard's Burlington, Iowa, factory and are backed by a two-year parts, one-year labor warranty.

The DISH Playmaker and DISH Playmaker dual is available in the following models:

For use with one receiver:

- ♦ PL-7000 – DISH Playmaker, \$249 MSRP
- ♦ PL7000R – DISH Playmaker, \$329 MSRP

For use with two receivers:

- ♦ PL-8000 – DISH Playmaker Dual – White, \$299 MSRP
- ♦ PL-8035 – DISH Playmaker Dual – Black, \$299 MSRP

The antennas are also compatible with Winegard's new roof kit (RK-4000, \$49.99 MSRP) and existing TR-1518 tripod mount.

For more information or to purchase any of the new DISH Playmaker products, visit [www.winegard.com/playmaker](http://www.winegard.com/playmaker)

## HATE CLEANING THE STOVE TOP, GRILL, OVEN, BAKING SHEETS, PANS? STOP GETTING THEM DIRTY!



Clean Cooking Areas in Seconds with StoveWrap

Even those who love to cook despise the clean up afterwards. Cleaning the stove top, or the oven, or baked on cookware ranks among the worst of all household chores.

The solution, however, is simple and doesn't take more than a few seconds. Yes, that's right, SECONDS. It doesn't require commercial cleaners, DIY home remedies or even a paper towel. All you need is a pair of scissors and a Stove Wrap kit.

Stove Wrap is a new splatter guard designed for use on stove tops, ovens, grills, camping stoves and even cookware such as baking sheets and pots and pans. Simply cut to size, apply, then peel off and clean after use. It really is that simple!

Made of PTFE coated fiberglass fabric, Stove

Wrap Liners are BPA/PFOA-free and FDA approved for food contact.

The liners are nonstick, non-flammable and heat resistant to 550 degrees F (228 C.)

Because liners are washable and dishwasher safe, Stove Wrap

can be used over and over again. Not only do they make clean up easier by

catching drips, spills and splatter, but Stove Wrap protects stove tops from

the scruffs and scratches

that can result from abrasive cleaners.

Stove Wrap is available in three varieties:

- 1) Residential: Designed for kitchen stovetops. The DIY kit comes with a circle cutter, measuring tape and white marker.
- 2) Multipurpose: Can be used for grills, ovens, frying pans, etc.
- 3) RV: The RV is available in two versions – for Atwood or Suburban ranges. These are already cut and measured to size.

To learn more about Stove Wrap, visit [www.StoveWrap.com](http://www.StoveWrap.com). For sales inquiries or additional information, contact Joe Pasqualini, [joe@productlaunchers.co](mailto:joe@productlaunchers.co), 914-943-6945.

## Farewells

### DAVE HIGBIE, PAST PUBLISHER, EDITOR

David (Dave) Higbie, 82 of Maston Lake, Michigan passed away September 8. Dave was an asset to NCHA/FCRV in the 70's and 80's lending his expertise in the publishing field and his contacts in the RV

industry. Early on he worked with Don Edgar who did reporting and publications for NCHA. Both Dave and Don were there during NCHA's largest growth period (77,000 families). An avid RVer with his wife

Martha, he started his own successful publication in Greenville, MI called "Trails-A-Way" and managed a caravan and rally program in conjunction with the publication. He was often called on for advice by the leaders of NCHA. When NCHA decided to publish its own magazine in 1983, Dave was asked to be publisher and editor which he did with Martha's help for several years. Later on Dave was asked by the Affinity group to organize the 'Great North American Rally' which became a popular national event.

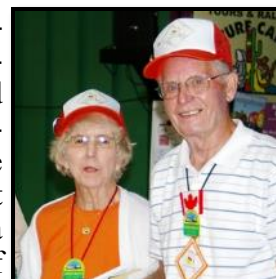
Dave was a newspaper man for 40 years working for several Michigan Newspapers which eventually led him to Greenville and editorship of the Daily News. Other jobs he enjoyed were managing gates and parking at the Greater Iona Fair in the summers and the purchasing department of the Florida State Fair in the winters. Martha Higbie said, "He loved the Lord as his Savior and combined his love with a passion for travel by conducting gospel services while hosting RV trips and rallies. During a visit to Haiti a few years ago Dave saw the need and spent much time working with the Baptist Mission in Haiti and their office in Grand Rapids. He loved living on the lake and enjoyed pontoon boat rides with family and friends. He loved the laughter and company of his children, grandchildren and great grandchildren."

Dave Higbie is survived by his wife, Martha, 4 children, Karlie (Dave) Welsch, Kevin (Stacy) Higbie), Sue (Don) Thompson, and Pam Kimble (Eric Forgar), 9 grandchildren and 2 greatgrandchildren. Condolences may be sent to Martha at [darmart77@hotmail.com](mailto:darmart77@hotmail.com).



### LOREEN BEATTY, WORKED FOR CANADIAN RV PARKING LAW CHANGE

One of NCHA/FCRV's earliest selling points was legislation activism for campers and RVers. Loreen and Chris Beaty of Port Rowan, Ontario were a big part of the drive to get Town and City Laws in Canada changed to allow the parking of





RVs at residences and elsewhere. Loreen “Lorry” Beatty of Port Rowan, Ontario passed away at the age of 85 on September 16, 2017.

The Beattys were very active volunteers over the years as Central Ontario Field Directors, Security Chairmen for the '86 Campvention, Chairmen of the 4-R Recycling Committee, Grounds Chairmen for the 1990 Canadian Regional, and Co-chairmen of the 1991 Provincial Campout. Their daughter Lana was Ontario Teen Queen and 2<sup>nd</sup> runner up for Miss FCRV at the Colorado Campvention. Daughter Carla was Miss Ontario 1977-78 and was in the Miss FCRV contest at the Indiana Campvention.

Chris and Loreen Beatty were presented the Award of Merit by the Ontario Provincial Association in 1983, A Citation from NCHA/FCRV in 1984 and the ECHO Family Campers award in 1995. Their lifetime of dedication and important work for the organization is an example to all. Barb Turner said, “ We always enjoyed seeing them at rallies, particularly the Retitree Rally where she was usually in the Variety Night acts doing a monologue.”

Loreen Beatty is survived by her husband of 62 years, Christopher, Daughters, Lana (Pat) Ghagan, Gina (Mark) Watts, and Carla (Matthew) Trowell, and six grandchildren. Memorial donations may be made to the OPA Scholarship Fund or New Hope United Church. Condolences may be sent to Chris at candlbeatty@gmail.com.

---

**Anne Bailey**, 8-15-17, Shenandoah Valley, Virginia, Travelin' Wranglers, State Conservation Dirs. 25 years.

**Ellen Gary**, 92, Dalton, Pennsylvania, treasurer for Centre Hall Campvention.

**Roy MacDonald**, 9-13-17, Brantford, Ontario, President of O.P.A., Brantford Sundowners, Wally Byam Caravans, lifetime member.



## UPCOMING EVENTS

### OCTOBER

#### **October 2 – 5, 2017 – Kansas State Retiree “Sunchacers” Fall Rally**

Winfield Fairgrounds. Electric/water, dump available. Theme is Oktoberfest.

Monday morning coffee break, bring a sweet. One potluck, games, poker walk, hospitality, card bingo, lots of fun

#### **October 6 – 8, 2017 - Michigan Halloween Campout**

Hudsonville Fairgrounds, Weekend \$50, pre-registration \$25, 2nd family in unit \$25, Day pass \$17 per car, Thursday arrival \$17. Desert walk, games, costume judging, trailer decoration, pumpkin carving, trick or treating, pot luck dinner. send check payable to Halloween Campout to Cindy Westra, 501 S. Iva Rd., Merrill, MI 49637. Include # of youth, teens. Info 619-915-2293, clwestra10@att.net

### NOVEMBER

#### **November 2 – 5, 2017 – Texas State Association Fall Campventure**

Oakdale Park 1019 NE Barnard Street, Glen Rose, Texas 76043. Camping fee is \$28.00 per night, payable by check or cash at the rally. Credit cards are not accepted. All sites have full hookups, 30 to 50 amps and most are pull -thru. This is a city park and is located downtown close to everything. We are currently working on the schedule of events, but if you would like to help in any way, please let us know. Ideas and suggestions would also be appreciated.

This area of Texas has a lot of history, going back many centuries, as well as new discoveries. There are many boutiques, museums and restaurants to keep you entertained when not involved in activities being planned at the park. Please give Kathie Johnson a call at 713-898-3204 or email [kathiejohnson@suddenlink.net](mailto:kathiejohnson@suddenlink.net) to let us know to be looking for you. E-mail Kathie and request a pre-registration form

**November 3-5, 2017 - Florida State Association Fall Rally**

Blueberry Hill RV Resort, Bushnell, FL. The camping fee will be \$30.00 per night. We are planning the usual games, a picnic type dinner on Friday, a catered meal on Saturday(\$), breakfast on Saturday and some unexpected fun. So let's all come out and have a good time. Please call the campground at (352) 793-4112 to make your reservation and send the form below along with \$10 to make your reservation with FSA. If you have any questions, please call Emma or Bob Moore at (863) 234-1173 or (863) 234-1153.

**November 9 - 11, 2017 - FCRV Veterans Campout**

ABC Campground, Branson, MO. \$35 per night, full hookup, 50 amp., To register contact Ron Braley at [fcrv-veterans@outlook.com](mailto:fcrv-veterans@outlook.com).





**47<sup>th</sup> INTERNATIONAL RETIREE RALLY**  
**NORTH FLORIDA FAIRGROUNDS**  
**441 PAUL RUSSELL ROAD, TALLAHASSEE, FLORIDA 32301**  
**EARLY DAYS: MARCH 16<sup>TH</sup> – MARCH 19<sup>TH</sup>**  
**RALLY DAYS: MARCH 20<sup>TH</sup> – MARCH 25<sup>TH</sup>**

**FAMILY CAMPERS AND RVERS**



LAST NAME: \_\_\_\_\_ FIRST: \_\_\_\_\_ SPOUSE/OTHER: \_\_\_\_\_

ADDRESS: \_\_\_\_\_ CITY: \_\_\_\_\_ STATE/PROVINCE: \_\_\_\_\_ ZIP/POSTAL: \_\_\_\_\_

LAST NAME OF OTHER: \_\_\_\_\_ ADDRESS: \_\_\_\_\_ ST/PROVINCE: \_\_\_\_\_ ZIP/POSTAL: \_\_\_\_\_

PHONE# \_\_\_\_\_ OTHER: \_\_\_\_\_

WHICH ARE YOU REGISTERING FOR? CAMPING: \_\_\_\_\_ CAMP PASS: \_\_\_\_\_ IS THIS YOUR FIRST RETIREE RALLY: YES \_\_\_\_\_ NO \_\_\_\_\_

ARE YOU A VETERAN: YES \_\_\_\_\_ NO \_\_\_\_\_ NUMBER OF VETERANS IN YOUR UNIT: \_\_\_\_\_

EMAIL ADDRESS: \_\_\_\_\_ CONFIRMATION LETTER SENT IN PDF FILE: YES \_\_\_\_\_ NO \_\_\_\_\_

**CONFIRMATION LETTERS WILL BE SENT BY EMAIL. IF YOU WISH IT SENT BY MAIL TO ANOTHER ADDRESS THAN THE ONE ABOVE, PLEASE PROVIDE THE ADDRESS IN THE SPACE BELOW:**

ADDRESS: \_\_\_\_\_ CITY: \_\_\_\_\_ STATE: \_\_\_\_\_ ZIP/PROVINCE: \_\_\_\_\_

**SPECIAL NEEDS PARKING:**

**TO BE PARKED IN SPECIAL NEEDS (HANDICAP) AREA, YOU MUST HAVE ON FILE WITH THE REGISTRAR AN UP-TO-DATE : DOCTOR'S CERTIFICATE, STATE LICENSE REGISTRATION INCLUDING HANDICAP PLATE, OR HANDICAP PLACARD. THIS AREA IS RESERVED FOR WHEELCHAIRS, WALKERS, OR THOSE WITH LIMITED MOBILITY PROBLEMS: \_\_\_\_\_**

**GUEST ARE WELCOME:**

Guests/Non-FCRV members are welcome. They may be in their own unit or with you. Have them complete a registration form and indicate they are your guests. We strongly suggest they enter the camping area at the same time you do. We are guests or NON-FCRV members of: \_\_\_\_\_.

**FEES:**

**EARLY BIRD PARKING (MARCH 16 – 19): FEE IS \$25 PER NIGHT WITH WATER AND ELECTRIC. EARLY BIRD FEES WILL BE COLLECTED AT TALLAHASSEE.**

**RALLY FEES: MARCH 20 – MARCH 25 AND LEAVE MONDAY: INCLUDES: 5 nights of camping, water, electric, Ice Cream Social, 2 evening meals, entertainment and all activities connected with the Rally.**

	<b><u>Pre-registration (paid in advance in full)</u></b>	<b><u>At the Gate</u></b>
Two people in a unit:	\$225.00	\$250.00
Single person in a unit:	\$195.00	\$220.00
Camp Pass (2 people or second couple in a unit)	\$125.00	\$150.00
Camp Pass ( 1 person or extra person in a unit)	\$ 85.00	\$110.00

**REFUND POLICY: Refunds must be requested in writing by mail or email or phone call to the**

**Registrar.** Refunds requested before March 9, 2018 will receive the following: two people in a unit: \$200, one person in a unit: \$170.00, Camp Pass two people: \$100.00, Camp Pass single person: \$60.00.

After March 9, ONLY THE CAMPING FEE WILL BE REFUNDED. CAMP PASSES WILL RECEIVE NO REFUND.

**Make checks or money order (US CURRENCY ONLY) payable to: FCRV/NCHA RETIREE RALLY 2018. NO**

**CREDIT CARDS.** Mail registration to: Bill and Penny Ramlow, 8009 Cherry Branch DR., Ruskin, FL. 33573. You can contact them at: 305-822-6589 and 813-545-6083 or email them at [pramlow@aol.com](mailto:pramlow@aol.com).





# 58<sup>th</sup> ANNUAL FAMILY CAMPERS & RVers CAMPVENTION

HOSTED BY: REGION SIX  
SOUTHEAST REGION

## "WHERE OUR COUNTRY BEGAN"

THE MEADOW EVENT PARK, 13191 DAWN BLVD, DOSWELL, VIRGINIA 23047  
EARLY DAYS: JULY 7 - 8, 2018 RALLY DAYS: JULY 9-13, 2018  
EARLY DAYS PARKING: \$25 PER NIGHT  
DEADLINE FOR REGISTRATIONS: JUNE 21, 2018



REGISTRAR ONLY:  
REG #: \_\_\_\_\_  
CH #: \_\_\_\_\_  
AMT: \_\_\_\_\_  
SN: \_\_\_\_\_

LAST NAME: \_\_\_\_\_ FIRST NAME: \_\_\_\_\_ SPOUSE/OTHER: \_\_\_\_\_  
ADDRESS: \_\_\_\_\_ CITY: \_\_\_\_\_ ST/PRV: \_\_\_\_\_ ZIP CODE: \_\_\_\_\_  
LAST NAME OF OTHER: \_\_\_\_\_ ADDRESS: \_\_\_\_\_ ST/PRV: \_\_\_\_\_ ZIP: \_\_\_\_\_  
PHONE #: \_\_\_\_\_ EMAIL: \_\_\_\_\_ SEND MY CONFIRMATION LETTER IN PDF: YES \_\_\_ NO \_\_\_  
IS THIS YOUR FIRST CAMPVENTION? YES \_\_\_ NO \_\_\_ ARE YOU A VETERAN? YES: \_\_\_ NO: \_\_\_

### NUMBER OF PEOPLE IN YOUR UNIT:

#OF ADULTS: \_\_\_\_\_ TEENS: \_\_\_\_\_ YOUTH 9-12 \_\_\_\_\_ YOUTH 5-8 \_\_\_\_\_ YOUTH 0-4 \_\_\_\_\_ TOTAL NUMBER OF PEOPLE IN UNIT: \_\_\_\_\_  
PLEASE LIST THE NAMES AND AGES OF ALL TEENS AND YOUTH:

NAME	AGE	NAME	AGE

### CAMPVENTION PARKING:

THE GATES WILL BE OPEN ALL DAYS FROM 8 A.M. TILL 8 P.M. THERE WILL BE AN OVERFLOW AREA FOR THOSE ARRIVING LATE, HOWEVER THERE ARE NO HOOKUPS. THE FIRST 150 UNITS THROUGH THE GATE WILL HAVE FULL HOOK-UP. PARKING IS HOBO STYLE WITH NO SAVING OF SITES. IF YOU WANT TO PARK NEXT TO SOMEONE COME IN TOGETHER. THOSE WITHOUT SEWER WILL BE GIVEN A VOUCHER FOR ONE FREE DUMP.

### SPECIAL NEEDS INFORMATION

CHECK IF REQUESTING A SPECIAL NEEDS SITE: \_\_\_\_\_.  
NO SPECIAL NEEDS SITES WILL BE AVAILABLE AT THE GATE. YOU MUST BE REGISTERED.

### REGISTRATION:

EVERYONE MUST FILL OUT A REGISTRATION FORM INCLUDING SECOND FAMILIES AND CAMP PASSES. SUBMIT PAYMENT WITH REGISTRATION FORM. ALL FUNDS SHOULD BE US. CURRENCY OR CHECKS. NO CREDIT CARDS.

	REGISTRATION	AT GATE
ONE FAMILY IN UNIT.....	\$290	\$300
EXTRA FAMILY IN UNIT.....	\$135	\$140
WALK-IN CAMP PASS.....		\$20 PER DAY

### THINGS TO SEE AND DO:

COLONIAL WILLIAMSBURG, KINGS DOMIMION AMUSEMENT PARK AND BUSCH GARDENS WILLIAMSBURG, BIRTH PLACES OF: ROBERT E. LEE, GEORGE WASHINGTON, HOMES OF: PATRICK HENRY, PRESIDENT JOHN MADISON, STONEWALL JACKSON SHRINE, NUMEROUS FORTS, MUSEUMS AND BATTLEFIELDS.

MAKE CHECKS PAYABLE TO: FCRV 2018 CAMPVENTION  
MAIL TO: BILL AND PENNY RAMLOW  
341 HOLLY COVE ROAD #8  
WHITTIER, NC 28789

REFUND POLICY: IF YOU ARE UNABLE TO ATTEND, ALL EXCEPT \$25 WILL BE REFUNDED

CONTACT THEM AT: 305-822-6589, 813-545-6083 OR

EMAIL: [pramlow@aol.com](mailto:pramlow@aol.com)

WE WOULD LIKE TO VOLUNTEER FOR: \_\_\_\_\_